

NDIS Price Guide 2019/2020

**1. Assistance with Daily Life
(includes Supported Independent Living)**

2. Transport

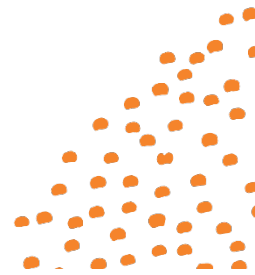
**4. Assistance with Social and Community
Participation**

7. Support Coordination

**9. Increased Social and Community
Participation**

11. Improved Relationships

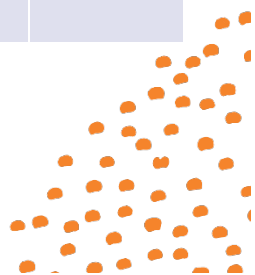
15. Improved Daily Living Skills



Assistance with daily life (includes Supported Independent Living)

Support Item Number	Support Item	Support Item Description	Unit of Measure	Unit Price
01_001_0101_1_1	Transitional Support	Transition to NDIS funding – payment of rent and utility accounts. Short term payment as per participant plan.	Each occurrence	To be quoted
01_002_0107_1_1	Assistance With Self-Care - Standard - Active Overnight	Assistance with, or supervision of, personal tasks of daily living where overnight support is needed and the care giver will not have the option to sleep.	Hour	\$59.40
01_002_0107_1_1_T	Assistance With Self-Care Activities - Standard - Active Overnight - TTP	Assistance with, or supervision of, personal tasks of daily living where overnight support is needed and the care giver will not have the option to sleep. Support delivered by a TTP provider.	Hour	\$63.85
01_003_0107_1_1	Assistance From Live-In Carer	A person lives in the house of, or travels with the participant and provides assistance with, and/or supervision of, personal tasks of daily life to develop skills of the participant to live as autonomously as possible.	Hour	To be quoted
01_004_0107_1_1	Assistance With Personal Domestic Activities	Assist participant to undertake and/or develop skills to maintain their home environment where the participant owns their own home and/or has sole or substantial responsibility for its maintenance. Includes assisting participant to do basic house and yard work.	Hour	\$50.03
01_010_0107_1_1	Assistance With Self-Care - Night-Time Sleepover	Assistance with, or supervision of, personal tasks of daily living where overnight support is needed, but the care giver can sleep when not required to provide support.	Each occurrence	\$214.03
01_011_0107_1_1	Assistance With Self-Care Activities - Standard - Weekday Daytime	Assisting with, and/or supervising, personal tasks of daily life to develop skills of the participant to live as autonomously as possible.	Hour	\$52.85
01_011_0107_1_1_T	Assistance With Self-Care Activities - Standard - Weekday Daytime - TTP	Assisting with, and/or supervising, personal tasks of daily life to develop skills of the participant to live as autonomously as possible. Support delivered by a TTP provider.	Hour	\$56.81

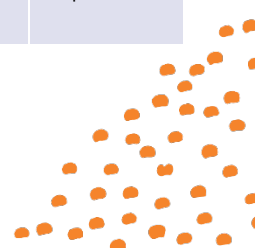
NOTE: Temporary Transformation Payment (TTP) supports and codes will be used on all new service agreements. Support Item Numbers ending in a T are TTP Supports.



Assistance with daily life (inc SIL) (Cont'd)

Support Item Number	Support Item	Support Item Description	Unit of Measure	Unit Price
01_012_0107_1_1	Assistance With Self-Care Activities - Standard - Public Holiday	Assisting with, and/or supervising, personal tasks of daily life to develop skills of the participant to live as autonomously as possible.	Hour	\$118.34
01_012_0107_1_1_T	Assistance With Self-Care Activities - Standard - Public Holiday - TTP	Assisting with, and/or supervising, personal tasks of daily life to develop skills of the participant to live as autonomously as possible. Support delivered by a TTP provider.	Hour	\$127.21
01_013_0107_1_1	Assistance With Self-Care Activities - Standard - Saturday	Assisting with, and/or supervising, personal tasks of daily life to develop skills of the participant to live as autonomously as possible.	Hour	\$72.69
01_013_0107_1_1_T	Assistance With Self-Care Activities - Standard - Saturday - TTP	Assisting with, and/or supervising, personal tasks of daily life to develop skills of the participant to live as autonomously as possible. Support delivered by a TTP provider.	Hour	\$78.14
01_014_0107_1_1	Assistance With Self-Care Activities - Standard - Sunday	Assisting with, and/or supervising, personal tasks of daily life to develop skills of the participant to live as autonomously as possible.	Hour	\$94.52
01_014_0107_1_1_T	Assistance With Self-Care Activities - Standard - Sunday - TTP	Assisting with, and/or supervising, personal tasks of daily life to develop skills of the participant to live as autonomously as possible. Support delivered by a TTP provider.	Hour	\$101.61
01_015_0107_1_1	Assistance With Self-Care Activities - Standard - Evening	Assisting with, and/or supervising, personal tasks of daily life to develop skills of the participant to live as autonomously as possible.	Hour	\$58.31
01_015_0107_1_1_T	Assistance With Self-Care Activities - Standard - Evening - TTP	Assisting with, and/or supervising, personal tasks of daily life to develop skills of the participant to live as autonomously as possible. Support delivered by a TTP provider.	Hour	\$62.69
01_016_0104_1_1	Specialised Home Based Assistance For A Child	Specialist assistance in the home required due to additional requirements of a child's disability; may be provided to strengthen the sustainability of informal supports.	Hour	\$50.03
01_017_0107_1_1	On-Call Overnight Monitoring - Off Site Or Onsite (Inc. 1 Hr Assist)	Overnight on-call assistance with, or supervision of, personal tasks of daily living.	Each occurrence	To be quoted
01_019_0120_1_1	House And/Or Yard Maintenance	Performing essential house and/or yard activities that the participant is not able to undertake.	Hour	\$48.28
01_020_0120_1_1	House Cleaning And Other Household Activities	Performing essential house cleaning activities that the participant is not able to undertake.	Hour	\$49.16

NOTE: Temporary Transformation Payment (TTP) supports and codes will be used on all new service agreements. Support Item Numbers ending in a T are TTP Supports.



Assistance with daily life (inc SIL) (Cont'd)

Support Item Number	Support Item	Support Item Description	Unit of Measure	Unit Price
01_021_0120_1_1	Linen Service	Provision of clean linen to a participant unable to do their own laundry without assistance.	Each occurrence	To be quoted
01_022_0120_1_1	Assistance With The Cost Of Preparation And Delivery Of Meals	Preparation and delivery of meals to a participant who is unable to do this themselves, and is not in receipt of other supports that would meet the same need. Food costs are not included. Cost varies with the number of meals prepared and deliveries required.	Each occurrence	To be quoted
01_026_0115_1_1	Assistance In Living Arrangements (Host Family/Alternative Family Situation)	Agreement for a participant with high support needs to stay with a host family. The host family will have minimum qualifications & provide support in the home for the agreed time. The quote will reflect the hours of assistance required & length of stay.	Day	To be quoted
01_027_0115_1_1	Assistance In A Shared Living Arrangement	Daily living support provided in a shared living arrangement. This rate is paid by the hour for one-to-one assistance, divided by the number of people supported.	Each occurrence	To be quoted
01_028_0115_1_1	Supported Independent Living - For 2 - Complex	Assisting with and/or supervising tasks of daily life to develop the skills of the individuals with complex support needs to live as autonomously as possible.	Week	To be quoted
01_029_0115_1_1	Supported Independent Living - For 3 - Complex	Assisting with and/or supervising tasks of daily life to develop the skills of the individuals with complex support needs to live as autonomously as possible.	Week	To be quoted
01_030_0115_1_1	Supported Independent Living - For 4 - Complex	Assisting with and/or supervising tasks of daily life to develop the skills of the individuals with complex support needs to live as autonomously as possible.	Week	To be quoted
01_031_0115_1_1	Supported Independent Living - For 5 - Complex	Assisting with and/or supervising tasks of daily life to develop the skills of the individuals with complex support needs to live as autonomously as possible.	Week	To be quoted
01_032_0115_1_1	Supported Independent Living - For 6 - Complex	Assisting with and/or supervising tasks of daily life to develop the skills of the individuals with complex support needs to live as autonomously as possible.	Week	To be quoted

NOTE: Temporary Transformation Payment (TTP) supports and codes will be used on all new service agreements. Support Item Numbers ending in a T are TTP Supports.



Assistance with daily life (inc SIL) (Cont'd)

Support Item Number	Support Item	Support Item Description	Unit of Measure	Unit Price
01_033_0115_1_1	Supported Independent Living - For 7 - Complex	Assisting with and/or supervising tasks of daily life to develop the skills of the individuals with complex support needs to live as autonomously as possible.	Week	To be quoted
01_034_0115_1_1	Supported Independent Living - For 2 - Standard	Assisting with and/or supervising tasks of daily life to develop the skills of the individuals with standard (or mixed) support needs to live as autonomously as possible.	Week	To be quoted
01_035_0115_1_1	Supported Independent Living - For 3 - Standard	Assisting with and/or supervising tasks of daily life to develop the skills of the individuals with standard (or mixed) support needs to live as autonomously as possible.	Week	To be quoted
01_036_0115_1_1	Supported Independent Living - For 4 - Standard	Assisting with and/or supervising tasks of daily life to develop the skills of the individuals with standard (or mixed) support needs to live as autonomously as possible.	Week	To be quoted
01_037_0115_1_1	Supported Independent Living - For 5 - Standard	Assisting with and/or supervising tasks of daily life to develop the skills of the individuals with standard (or mixed) support needs to live as autonomously as possible.	Week	To be quoted
01_038_0115_1_1	Supported Independent Living - For 6 - Standard	Assisting with and/or supervising tasks of daily life to develop the skills of the individuals with standard (or mixed) support needs to live as autonomously as possible.	Week	To be quoted
01_039_0115_1_1	Supported Independent Living - For 7 - Standard	Assisting with and/or supervising tasks of daily life to develop the skills of the individuals with standard (or mixed) support needs to live as autonomously as possible.	Week	To be quoted
01_040_0115_1_1	Supported Independent Living - For 3 - Lower Need	Assisting with and/or supervising tasks of daily life to develop the skills of the individuals with lower support needs to live as autonomously as possible.	Week	To be quoted
01_041_0115_1_1	Supported Independent Living - For 4 - Lower Need	Assisting with and/or supervising tasks of daily life to develop the skills of the individuals with lower support needs to live as autonomously as possible.	Week	To be quoted
01_042_0115_1_1	Supported Independent Living - For 5 - Lower Need	Assisting with and/or supervising tasks of daily life to develop the skills of the individuals with lower support needs to live as autonomously as possible.	Week	To be quoted

NOTE: Temporary Transformation Payment (TTP) supports and codes will be used on all new service agreements. Support Item Numbers ending in a T are TTP Supports.



Assistance with daily life (inc SIL) (Cont'd)

Support Item Number	Support Item	Support Item Description	Unit of Measure	Unit Price
01_043_0115_1_1	Supported Independent Living - For 6 - Lower Need	Assisting with and/or supervising tasks of daily life to develop the skills of the individuals with lower support needs to live as autonomously as possible.	Week	To be quoted
01_044_0115_1_1	Supported Independent Living - For 7 - Lower Need	Assisting with and/or supervising tasks of daily life to develop the skills of the individuals with lower support needs to live as autonomously as possible.	Week	To be quoted
01_045_0115_1_1	Short Term Accommodation And Assistance - 1:4 - Weekday	Integrated support for self-care, accommodation, food & activities in a centre or group residence for short periods. Includes all expenses in 24 hour period with no additional loading. May be used for up to 14 consecutive days, then weekly rates apply.	Day	\$546.33
01_046_0115_1_1	Assistance In Individual Living Arrangement For Person With Complex Needs		Each occurrence	To be quoted
01_047_0115_1_1	Supported Independent Living - For 2 - Lower Need	Assisting with and/or supervising tasks of daily life to develop the skills of the individuals with lower support needs to live as autonomously as possible.	Week	To be quoted
01_049_0107_1_1	Establishment Fee For Personal Care/Community Access	Establishment Fee for Personal Care/Community Access (20 hours per month).	Each occurrence	\$861.13
01_051_0115_1_1	Short Term Accommodation And Assistance - 1:4 - Saturday	Integrated support for self-care, accommodation, food & activities in a centre or group residence for short periods. Includes all expenses in 24 hour period with no additional loading. May be used for up to 14 consecutive days, then weekly rates apply.	Day	\$644.56
01_052_0115_1_1	Short Term Accommodation And Assistance - 1:4 - Sunday	Integrated support for self-care, accommodation, food & activities in a centre or group residence for short periods. Includes all expenses in 24 hour period with no additional loading. May be used for up to 14 consecutive days, then weekly rates apply.	Day	\$765.78

NOTE: Temporary Transformation Payment (TTP) supports and codes will be used on all new service agreements. Support Item Numbers ending in a T are TTP Supports.



Assistance with daily life (inc SIL) (Cont'd)

Support Item Number	Support Item	Support Item Description	Unit of Measure	Unit Price
01_053_0115_1_1	Short Term Accommodation And Assistance - 1:4 - Public Holiday	Integrated support for self-care, accommodation, food & activities in a centre or group residence for short periods. Includes all expenses in 24 hour period with no additional loading. May be used for up to 14 consecutive days, then weekly rates apply.	Day	\$885.95
01_054_0115_1_1	Short Term Accommodation And Assistance - 1:2 - Weekday	Integrated support for self-care, accommodation, food & activities in a centre or group residence for short periods. Includes all expenses in 24 hour period with no additional loading. May be used for up to 14 consecutive days, then weekly rates apply.	Day	\$879.68
01_055_0115_1_1	Short Term Accommodation And Assistance - 1:2 - Saturday	Integrated support for self-care, accommodation, food & activities in a centre or group residence for short periods. Includes all expenses in 24 hour period with no additional loading. May be used for up to 14 consecutive days, then weekly rates apply.	Day	\$1,076.14
01_056_0115_1_1	Short Term Accommodation And Assistance - 1:2 - Sunday	Integrated support for self-care, accommodation, food & activities in a centre or group residence for short periods. Includes all expenses in 24 hour period with no additional loading. May be used for up to 14 consecutive days, then weekly rates apply.	Day	\$1,317.54
01_057_0115_1_1	Short Term Accommodation And Assistance - 1:2 - Public Holiday	Integrated support for self-care, accommodation, food & activities in a centre or group residence for short periods. Includes all expenses in 24 hour period with no additional loading. May be used for up to 14 consecutive days, then weekly rates apply.	Day	\$1,558.93
01_058_0115_1_1	Short Term Accommodation And Assistance - 1:1 - Weekday	Integrated support for self-care, accommodation, food & activities in a centre or group residence for short periods. Includes all expenses in 24 hour period with no additional loading. May be used for up to 14 consecutive days, then weekly rates apply.	Day	\$1,546.39

NOTE: Temporary Transformation Payment (TTP) supports and codes will be used on all new service agreements. Support Item Numbers ending in a T are TTP Supports.



Assistance with daily life (inc SIL) (Cont'd)

Support Item Number	Support Item	Support Item Description	Unit of Measure	Unit Price
01_059_0115_1_1	Short Term Accommodation And Assistance - 1:1 - Saturday	Integrated support for self-care, accommodation, food & activities in a centre or group residence for short periods. Includes all expenses in 24 hour period with no additional loading. May be used for up to 14 consecutive days, then weekly rates apply.	Day	\$1,939.31
01_060_0115_1_1	Short Term Accommodation And Assistance - 1:1 - Sunday	Integrated support for self-care, accommodation, food & activities in a centre or group residence for short periods. Includes all expenses in 24 hour period with no additional loading. May be used for up to 14 consecutive days, then weekly rates apply.	Day	\$2,422.10
01_061_0115_1_1	Short Term Accommodation And Assistance - 1:1 - Public Holiday	Integrated support for self-care, accommodation, food & activities in a centre or group residence for short periods. Includes all expenses in 24 hour period with no additional loading. May be used for up to 14 consecutive days, then weekly rates apply.	Day	\$2,904.89
01_281_0115_1_1	Individual Living Option - Host Arrangement	Specialist assistance to maintain an Individual Living Option Host family transitional arrangement.	Day	To be quoted
01_300_0104_1_1	Assistance With Self-Care Activities - Level 1 - Weekday Daytime	Assisting with, and/or supervising, personal tasks of daily life to develop skills of the participant to live as autonomously as possible.	Hour	\$52.85
01_300_0104_1_1_T	Assistance With Self-Care Activities - Level 1 - Weekday Daytime - TTP	Assisting with, and/or supervising, personal tasks of daily life to develop skills of the participant to live as autonomously as possible. Support delivered by a TTP provider.	Hour	\$56.81
01_301_0104_1_1	Assistance With Self-Care Activities - Level 1 - Evening	Assisting with, and/or supervising, personal tasks of daily life to develop skills of the participant to live as autonomously as possible.	Hour	\$58.31
01_301_0104_1_1_T	Assistance With Self-Care Activities - Level 1 - Evening - TTP	Assisting with, and/or supervising, personal tasks of daily life to develop skills of the participant to live as autonomously as possible. Support delivered by a TTP provider.	Hour	\$62.69
01_302_0104_1_1	Assistance With Self-Care Activities - Level 1 - Saturday	Assisting with, and/or supervising, personal tasks of daily life to develop skills of the participant to live as autonomously as possible.	Hour	\$72.69

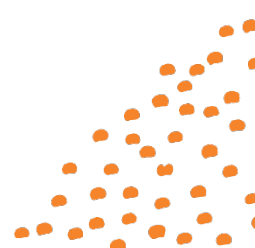
NOTE: Temporary Transformation Payment (TTP) supports and codes will be used on all new service agreements. Support Item Numbers ending in a T are TTP Supports.



Assistance with daily life (inc SIL) (Cont'd)

Support Item Number	Support Item	Support Item Description	Unit of Measure	Unit Price
01_302_0104_1_1_T	Assistance With Self-Care Activities - Level 1 - Saturday - TTP	Assisting with, and/or supervising, personal tasks of daily life to develop skills of the participant to live as autonomously as possible. Support delivered by a TTP provider.	Hour	\$78.14
01_303_0104_1_1	Assistance With Self-Care Activities - Level 1 - Sunday	Assisting with, and/or supervising, personal tasks of daily life to develop skills of the participant to live as autonomously as possible.	Hour	\$94.52
01_303_0104_1_1_T	Assistance With Self-Care Activities - Level 1 - Sunday - TTP	Assisting with, and/or supervising, personal tasks of daily life to develop skills of the participant to live as autonomously as possible. Support delivered by a TTP provider.	Hour	\$101.61
01_304_0104_1_1	Assistance With Self-Care Activities - Level 1 - Public Holiday	Assisting with, and/or supervising, personal tasks of daily life to develop skills of the participant to live as autonomously as possible.	Hour	\$118.34
01_304_0104_1_1_T	Assistance With Self-Care Activities - Level 1 - Public Holiday - TTP	Assisting with, and/or supervising, personal tasks of daily life to develop skills of the participant to live as autonomously as possible. Support delivered by a TTP provider.	Hour	\$127.21
01_305_0104_1_1	Assistance With Self-Care Activities - Level 1 - Active Overnight	Assistance with, or supervision of, personal tasks of daily living where overnight support is needed and the care giver will not have the option to sleep.	Hour	\$59.40
01_305_0104_1_1_T	Assistance With Self-Care Activities - Level 1 - Active Overnight - TTP	Assistance with, or supervision of, personal tasks of daily living where overnight support is needed and the care giver will not have the option to sleep. Support delivered by a TTP provider.	Hour	\$63.85
01_400_0104_1_1	Assistance With Self-Care Activities - Level 2 - Weekday Daytime	Assisting with, and/or supervising, personal tasks of daily life to develop skills of the participant to live as autonomously as possible in circumstances where the support delivered is high intensity and a more skilled or experienced support worker is required.	Hour	\$57.15
01_400_0104_1_1_T	Assistance With Self-Care Activities - Level 2 - Weekday Daytime - TTP	Assisting with, and/or supervising, personal tasks of daily life to develop skills of the participant to live as autonomously as possible in circumstances where the support delivered is high intensity and a more skilled or experienced support worker is required. Support delivered by a TTP provider.	Hour	\$61.11

NOTE: Temporary Transformation Payment (TTP) supports and codes will be used on all new service agreements. Support Item Numbers ending in a T are TTP Supports.



Assistance with daily life (inc SIL) (Cont'd)

Support Item Number	Support Item	Support Item Description	Unit of Measure	Unit Price
01_401_0104_1_1	Assistance With Self-Care Activities - Level 2 - Evening	Assisting with, and/or supervising, personal tasks of daily life to develop skills of the participant to live as autonomously as possible in circumstances where the support delivered is high intensity and a more skilled or experienced support worker is required.	Hour	\$63.06
01_401_0104_1_1_T	Assistance With Self-Care Activities - Level 2 - Evening - TTP	Assisting with, and/or supervising, personal tasks of daily life to develop skills of the participant to live as autonomously as possible in circumstances where the support delivered is high intensity and a more skilled or experienced support worker is required. Support delivered by a TTP provider.	Hour	\$67.44
01_402_0104_1_1	Assistance With Self-Care Activities - Level 2 - Saturday	Assisting with, and/or supervising, personal tasks of daily life to develop skills of the participant to live as autonomously as possible in circumstances where the support delivered is high intensity and a more skilled or experienced support worker is required.	Hour	\$78.63
01_402_0104_1_1_T	Assistance With Self-Care Activities - Level 2 - Saturday - TTP	Assisting with, and/or supervising, personal tasks of daily life to develop skills of the participant to live as autonomously as possible in circumstances where the support delivered is high intensity and a more skilled or experienced support worker is required. Support delivered by a TTP provider.	Hour	\$84.08
01_403_0104_1_1	Assistance With Self-Care Activities - Level 2 - Sunday	Assisting with, and/or supervising, personal tasks of daily life to develop skills of the participant to live as autonomously as possible in circumstances where the support delivered is high intensity and a more skilled or experienced support worker is required.	Hour	\$102.23
01_403_0104_1_1_T	Assistance With Self-Care Activities - Level 2 - Sunday - TTP	Assisting with, and/or supervising, personal tasks of daily life to develop skills of the participant to live as autonomously as possible in circumstances where the support delivered is high intensity and a more skilled or experienced support worker is required. Support delivered by a TTP provider.	Hour	\$109.32

NOTE: Temporary Transformation Payment (TTP) supports and codes will be used on all new service agreements. Support Item Numbers ending in a T are TTP Supports.



Assistance with daily life (inc SIL) (Cont'd)

Support Item Number	Support Item	Support Item Description	Unit of Measure	Unit Price
01_404_0104_1_1	Assistance With Self-Care Activities - Level 2 - Public Holiday	Assisting with, and/or supervising, personal tasks of daily life to develop skills of the participant to live as autonomously as possible in circumstances where the support delivered is high intensity and a more skilled or experienced support worker is required.	Hour	\$127.97
01_404_0104_1_1_T	Assistance With Self-Care Activities - Level 2 - Public Holiday - TTP	Assisting with, and/or supervising, personal tasks of daily life to develop skills of the participant to live as autonomously as possible in circumstances where the support delivered is high intensity and a more skilled or experienced support worker is required. Support delivered by a TTP provider.	Hour	\$136.84
01_405_0104_1_1	Assistance With Self-Care Activities - Level 2 - Active Overnight	Assistance with, or supervision of, personal tasks of daily living where overnight support is needed and the care giver will not have the option to sleep in circumstances where the support delivered is high intensity and a more skilled or experienced support worker is required.	Hour	\$64.24
01_405_0104_1_1_T	Assistance With Self-Care Activities - Level 2 - Active Overnight - TTP	Assistance with, or supervision of, personal tasks of daily living where overnight support is needed and the care giver will not have the option to sleep in circumstances where the support delivered is high intensity and a more skilled or experienced support worker is required. Support delivered by a TTP provider.	Hour	\$68.69
01_500_0104_1_1	Assistance With Self-Care Activities - Level 3 - Weekday Daytime	Assisting with, and/or supervising, personal tasks of daily life to develop skills of the participant to live as autonomously as possible in circumstances where the support delivered is very high intensity and a more skilled or experienced support worker is required.	Hour	\$60.04
01_500_0104_1_1_T	Assistance With Self-Care Activities - Level 3 - Weekday Daytime - TTP	Assisting with, and/or supervising, personal tasks of daily life to develop skills of the participant to live as autonomously as possible in circumstances where the support delivered is very high intensity and a more skilled or experienced support worker is required. Support delivered by a TTP provider.	Hour	\$64.00

NOTE: Temporary Transformation Payment (TTP) supports and codes will be used on all new service agreements. Support Item Numbers ending in a T are TTP Supports.



Assistance with daily life (inc SIL) (Cont'd)

Support Item Number	Support Item	Support Item Description	Unit of Measure	Unit Price
01_501_0104_1_1	Assistance With Self-Care Activities - Level 3 - Evening	Assisting with, and/or supervising, personal tasks of daily life to develop skills of the participant to live as autonomously as possible in circumstances where the support delivered is very high intensity and a more skilled or experienced support worker is required.	Hour	\$66.23
01_501_0104_1_1_T	Assistance With Self-Care Activities - Level 3 - Evening - TTP	Assisting with, and/or supervising, personal tasks of daily life to develop skills of the participant to live as autonomously as possible in circumstances where the support delivered is very high intensity and a more skilled or experienced support worker is required. Support delivered by a TTP provider.	Hour	\$70.61
01_502_0104_1_1	Assistance With Self-Care Activities - Level 3 - Saturday	Assisting with, and/or supervising, personal tasks of daily life to develop skills of the participant to live as autonomously as possible in circumstances where the support delivered is very high intensity and a more skilled or experienced support worker is required.	Hour	\$82.58
01_502_0104_1_1_T	Assistance With Self-Care Activities - Level 3 - Saturday - TTP	Assisting with, and/or supervising, personal tasks of daily life to develop skills of the participant to live as autonomously as possible in circumstances where the support delivered is very high intensity and a more skilled or experienced support worker is required. Support delivered by a TTP provider.	Hour	\$88.03
01_503_0104_1_1	Assistance With Self-Care Activities - Level 3 - Sunday	Assisting with, and/or supervising, personal tasks of daily life to develop skills of the participant to live as autonomously as possible in circumstances where the support delivered is very high intensity and a more skilled or experienced support worker is required.	Hour	\$107.37
01_503_0104_1_1_T	Assistance With Self-Care Activities - Level 3 - Sunday - TTP	Assisting with, and/or supervising, personal tasks of daily life to develop skills of the participant to live as autonomously as possible in circumstances where the support delivered is very high intensity and a more skilled or experienced support worker is required. Support delivered by a TTP provider.	Hour	\$114.46

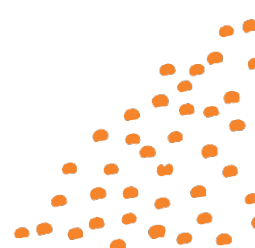
NOTE: Temporary Transformation Payment (TTP) supports and codes will be used on all new service agreements. Support Item Numbers ending in a T are TTP Supports.



Assistance with daily life (inc SIL) (Cont'd)

Support Item Number	Support Item	Support Item Description	Unit of Measure	Unit Price
01_504_0104_1_1	Assistance With Self-Care Activities - Level 3 - Public Holiday	Assisting with, and/or supervising, personal tasks of daily life to develop skills of the participant to live as autonomously as possible in circumstances where the support delivered is very high intensity and a more skilled or experienced support worker is required.	Hour	\$134.42
01_504_0104_1_1_T	Assistance With Self-Care Activities - Level 3 - Public Holiday - TTP	Assisting with, and/or supervising, personal tasks of daily life to develop skills of the participant to live as autonomously as possible in circumstances where the support delivered is very high intensity and a more skilled or experienced support worker is required. Support delivered by a TTP provider.	Hour	\$143.29
01_505_0104_1_1	Assistance With Self-Care Activities - Level 3 - Active Overnight	Assistance with, or supervision of, personal tasks of daily living where overnight support is needed and the care giver will not have the option to sleep in circumstances where the support delivered is very high intensity and a more skilled or experienced support worker is required.	Hour	\$67.47
01_505_0104_1_1_T	Assistance With Self-Care Activities - Level 3 - Active Overnight - TTP	Assistance with, or supervision of, personal tasks of daily living where overnight support is needed and the care giver will not have the option to sleep in circumstances where the support delivered is very high intensity and a more skilled or experienced support worker is required. Support delivered by a TTP provider.	Hour	\$71.92

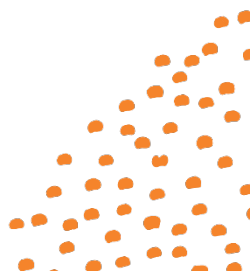
NOTE: Temporary Transformation Payment (TTP) supports and codes will be used on all new service agreements. Support Item Numbers ending in a T are TTP Supports.



Transport

Support Item Number	Support Item	Support Item Description	Unit of Measure	Unit Price
02_050_0108_1_1	Specialised Transport To School/ Educational Facility/ Employment/ Community	Specialised transport to school/ educational facility/ employment/ community	Day	To be quoted
02_051_0108_1_1	Transport	<p>Transport - Rise currently has three transport rates:</p> <p>TRANSPORT = .78c per km (only on existing agreements)</p> <p>TRANSPORT* = .92c per km (all new agreements)</p> <p>TR_GR 100% = \$ 5 per way for group transport</p>	Km or trip	See Description

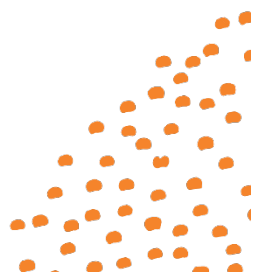
NOTE: Temporary Transformation Payment (TTP) supports and codes will be used on all new service agreements. Support Item Numbers ending in a T are TTP Supports.



Assistance with Social and Community Participation

Support Item Number	Support Item	Support Item Description	Unit of Measure	Unit Price
04_102_0125_6_1	Access Community, Social And Rec Activities - Standard - Public Holiday	Provision of support to enable a participant to engage in community, social and/or recreational activities.	Hour	\$118.34
04_102_0125_6_1_T	Access Community, Social And Rec Activities - Standard - Public Holiday - TTP	Provision of support to enable a participant to engage in community, social and/or recreational activities. Support delivered by a TTP provider.	Hour	\$127.21
04_103_0125_6_1	Access Community, Social And Rec Activities - Standard - Evening	Provision of support to enable a participant to engage in community, social and/or recreational activities.	Hour	\$58.31
04_103_0125_6_1_T	Access Community, Social And Rec Activities - Standard - Evening - TTP	Provision of support to enable a participant to engage in community, social and/or recreational activities. Support delivered by a TTP provider.	Hour	\$62.69
04_104_0125_6_1	Access Community, Social And Rec Activities - Standard - Weekday Daytime	Provision of support to enable a participant to engage in community, social and/or recreational activities.	Hour	\$52.85
04_104_0125_6_1_T	Access Community, Social And Rec Activities - Standard - Weekday Daytime - TTP	Provision of support to enable a participant to engage in community, social and/or recreational activities. Support delivered by a TTP provider.	Hour	\$56.81
04_105_0125_6_1	Access Community, Social And Rec Activities - Standard - Saturday	Provision of support to enable a participant to engage in community, social and/or recreational activities.	Hour	\$72.69
04_105_0125_6_1_T	Access Community, Social And Rec Activities - Standard - Saturday - TTP	Provision of support to enable a participant to engage in community, social and/or recreational activities. Support delivered by a TTP provider.	Hour	\$78.14

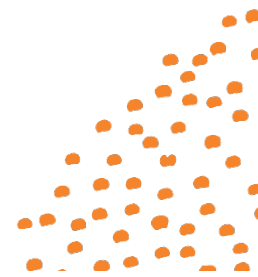
NOTE: Temporary Transformation Payment (TTP) supports and codes will be used on all new service agreements. Support Item Numbers ending in a T are TTP Supports.



Assistance with Social and Community Participation (cont'd)

Support Item Number	Support Item	Support Item Description	Unit of Measure	Unit Price
04_106_0125_6_1	Access Community, Social And Rec Activities - Standard - Sunday	Provision of support to enable a participant to engage in community, social and/or recreational activities.	Hour	\$94.52
04_106_0125_6_1_T	Access Community, Social And Rec Activities - Standard - Sunday - TTP	Provision of support to enable a participant to engage in community, social and/or recreational activities. Support delivered by a TTP provider.	Hour	\$101.61
04_111_0136_6_1	Group Activities In The Community - 1:2 - Standard - Weekday Daytime	Provision of support to enable a participant to engage in community, social and/or recreational activities.	Hour	\$29.60
04_111_0136_6_1_T	Group Activities In The Community - 1:2 - Standard - Weekday Daytime - TTP	Provision of support to enable a participant to engage in community, social and/or recreational activities. Support delivered by a TTP provider.	Hour	\$31.81
04_112_0136_6_1	Group Activities In The Community - 1:2 - Standard - Saturday	Provision of support to enable a participant to engage in community, social and/or recreational activities.	Hour	\$40.71
04_112_0136_6_1_T	Group Activities In The Community - 1:2 - Standard - Saturday - TTP	Provision of support to enable a participant to engage in community, social and/or recreational activities. Support delivered by a TTP provider.	Hour	\$43.76
04_113_0136_6_1	Group Activities In The Community - 1:2 - Standard - Sunday	Provision of support to enable a participant to engage in community, social and/or recreational activities.	Hour	\$52.93
04_113_0136_6_1_T	Group Activities In The Community - 1:2 - Standard - Sunday - TTP	Provision of support to enable a participant to engage in community, social and/or recreational activities. Support delivered by a TTP provider.	Hour	\$56.90
04_114_0136_6_1	Group Activities In The Community - 1:2 - Standard - Evening	Provision of support to enable a participant to engage in community, social and/or recreational activities.	Hour	\$32.65

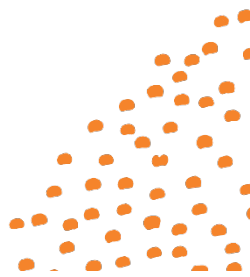
NOTE: Temporary Transformation Payment (TTP) supports and codes will be used on all new service agreements. Support Item Numbers ending in a T are TTP Supports.



Assistance with Social and Community Participation (cont'd)

Support Item Number	Support Item	Support Item Description	Unit of Measure	Unit Price
04_114_0136_6_1_T	Group Activities In The Community - 1:2 - Standard - Evening - TTP	Provision of support to enable a participant to engage in community, social and/or recreational activities. Support delivered by a TTP provider.	Hour	\$35.11
04_115_0125_6_1	Community, Social And Recreational Activities	Annual support to enable a participant to independently engage in community, social and recreational activities when costs of participation exceed an affordable level and without, the participant would be at risk of social isolation.	Each occurrence	Dependant on activity - quote will be in service agreement
04_116_0104_6_1	Group Activities In The Community - 1:2 - Complex - Weekday Daytime	Provision of support to enable a participant to engage in community, social and/or recreational activities, where a support worker with additional qualifications and experience relevant to the participant's complex needs is required.	Hour	\$32.00
04_116_0104_6_1_T	Group Activities In The Community - 1:2 - Complex - Weekday Daytime - TTP	Provision of support to enable a participant to engage in community, social and/or recreational activities, where a support worker with additional qualifications and experience relevant to the participant's complex needs is required. Support delivered by a TTP provider.	Hour	\$34.22
04_117_0104_6_1	Group Activities In The Community - 1:2 - Complex - Saturday	Provision of support to enable a participant to engage in community, social and/or recreational activities, where a support worker with additional qualifications and experience relevant to the participant's complex needs is required.	Hour	\$44.03

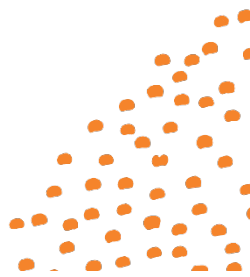
NOTE: Temporary Transformation Payment (TTP) supports and codes will be used on all new service agreements. Support Item Numbers ending in a T are TTP Supports.



Assistance with Social and Community Participation (cont'd)

Support Item Number	Support Item	Support Item Description	Unit of Measure	Unit Price
04_117_0104_6_1_T	Group Activities In The Community - 1:2 - Complex - Saturday - TTP	Provision of support to enable a participant to engage in community, social and/or recreational activities, where a support worker with additional qualifications and experience relevant to the participant's complex needs is required. Support delivered by a TTP provider.	Hour	\$47.08
04_118_0104_6_1	Group Activities In The Community - 1:2 - Complex - Sunday	Provision of support to enable a participant to engage in community, social and/or recreational activities, where a support worker with additional qualifications and experience relevant to the participant's complex needs is required.	Hour	\$57.25
04_118_0104_6_1_T	Group Activities In The Community - 1:2 - Complex - Sunday - TTP	Provision of support to enable a participant to engage in community, social and/or recreational activities, where a support worker with additional qualifications and experience relevant to the participant's complex needs is required. Support delivered by a TTP provider.	Hour	\$61.22
04_119_0104_6_1	Group Activities In The Community - 1:2 - Complex - Evening	Provision of support to enable a participant to engage in community, social and/or recreational activities, where a support worker with additional qualifications and experience relevant to the participant's complex needs is required.	Hour	\$35.31

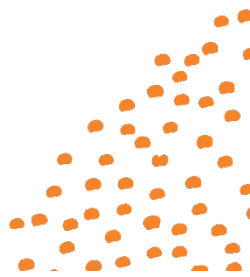
NOTE: Temporary Transformation Payment (TTP) supports and codes will be used on all new service agreements. Support Item Numbers ending in a T are TTP Supports.



Assistance with Social and Community Participation (cont'd)

Support Item Number	Support Item	Support Item Description	Unit of Measure	Unit Price
04_119_0104_6_1_T	Group Activities In The Community - 1:2 - Complex - Evening - TTP	Provision of support to enable a participant to engage in community, social and/or recreational activities, where a support worker with additional qualifications and experience relevant to the participant's complex needs is required. Support delivered by a TTP provider.	Hour	\$37.77
04_120_0136_6_1	Group Activities In The Community - 1:3 - Standard - Weekday Daytime	Provision of support to enable a participant to engage in community, social and/or recreational activities.	Hour	\$21.84
04_120_0136_6_1_T	Group Activities In The Community - 1:3 - Standard - Weekday Daytime - TTP	Provision of support to enable a participant to engage in community, social and/or recreational activities. Support delivered by a TTP provider.	Hour	\$23.48
04_121_0136_6_1	Group Activities In The Community - 1:3 - Standard - Saturday	Provision of support to enable a participant to engage in community, social and/or recreational activities.	Hour	\$30.05
04_121_0136_6_1_T	Group Activities In The Community - 1:3 - Standard - Saturday - TTP	Provision of support to enable a participant to engage in community, social and/or recreational activities. Support delivered by a TTP provider.	Hour	\$32.30
04_122_0136_6_1	Group Activities In The Community - 1:3 - Standard - Sunday	Provision of support to enable a participant to engage in community, social and/or recreational activities.	Hour	\$39.07
04_122_0136_6_1_T	Group Activities In The Community - 1:3 - Standard - Sunday - TTP	Provision of support to enable a participant to engage in community, social and/or recreational activities. Support delivered by a TTP provider.	Hour	\$42.00
04_123_0136_6_1	Group Activities In The Community - 1:3 - Standard - Evening	Provision of support to enable a participant to engage in community, social and/or recreational activities.	Hour	\$24.10

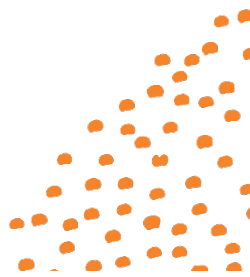
NOTE: Temporary Transformation Payment (TTP) supports and codes will be used on all new service agreements. Support Item Numbers ending in a T are TTP Supports.



Assistance with Social and Community Participation (cont'd)

Support Item Number	Support Item	Support Item Description	Unit of Measure	Unit Price
04_123_0136_6_1_T	Group Activities In The Community - 1:3 - Standard - Evening - TTP	Provision of support to enable a participant to engage in community, social and/or recreational activities. Support delivered by a TTP provider.	Hour	\$25.91
04_124_0104_6_1	Group Activities In The Community - 1:3 - Complex - Weekday Daytime	Provision of support to enable a participant to engage in community, social and/or recreational activities, where a support worker with additional qualifications and experience relevant to the participant's complex needs is required.	Hour	\$23.62
04_124_0104_6_1_T	Group Activities In The Community - 1:3 - Complex - Weekday Daytime - TTP	Provision of support to enable a participant to engage in community, social and/or recreational activities, where a support worker with additional qualifications and experience relevant to the participant's complex needs is required. Support delivered by a TTP provider.	Hour	\$25.26
04_125_0104_6_1	Group Activities In The Community - 1:3 - Complex - Saturday	Provision of support to enable a participant to engage in community, social and/or recreational activities, where a support worker with additional qualifications and experience relevant to the participant's complex needs is required.	Hour	\$32.50
04_125_0104_6_1_T	Group Activities In The Community - 1:3 - Complex - Saturday - TTP	Provision of support to enable a participant to engage in community, social and/or recreational activities, where a support worker with additional qualifications and experience relevant to the participant's complex needs is required. Support delivered by a TTP provider.	Hour	\$34.75

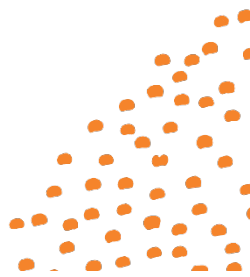
NOTE: Temporary Transformation Payment (TTP) supports and codes will be used on all new service agreements. Support Item Numbers ending in a T are TTP Supports.



Assistance with Social and Community Participation (cont'd)

Support Item Number	Support Item	Support Item Description	Unit of Measure	Unit Price
04_126_0104_6_1	Group Activities In The Community - 1:3 - Complex - Sunday	Provision of support to enable a participant to engage in community, social and/or recreational activities, where a support worker with additional qualifications and experience relevant to the participant's complex needs is required.	Hour	\$42.26
04_126_0104_6_1_T	Group Activities In The Community - 1:3 - Complex - Sunday - TTP	Provision of support to enable a participant to engage in community, social and/or recreational activities, where a support worker with additional qualifications and experience relevant to the participant's complex needs is required. Support delivered by a TTP provider.	Hour	\$45.19
04_127_0104_6_1	Group Activities In The Community - 1:3 - Complex - Evening	Provision of support to enable a participant to engage in community, social and/or recreational activities, where a support worker with additional qualifications and experience relevant to the participant's complex needs is required.	Hour	\$26.06
04_127_0104_6_1_T	Group Activities In The Community - 1:3 - Complex - Evening - TTP	Provision of support to enable a participant to engage in community, social and/or recreational activities, where a support worker with additional qualifications and experience relevant to the participant's complex needs is required. Support delivered by a TTP provider.	Hour	\$27.88
04_128_0136_6_1	Group Activities In The Community - 1:2 - Standard - Public Holiday	Provision of support to enable a participant to engage in community, social and/or recreational activities.	Hour	\$66.27

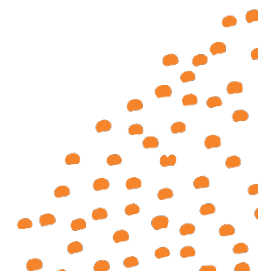
NOTE: Temporary Transformation Payment (TTP) supports and codes will be used on all new service agreements. Support Item Numbers ending in a T are TTP Supports.



Assistance with Social and Community Participation (cont'd)

Support Item Number	Support Item	Support Item Description	Unit of Measure	Unit Price
04_128_0136_6_1_T	Group Activities In The Community - 1:2 - Standard - Public Holiday - TTP	Provision of support to enable a participant to engage in community, social and/or recreational activities. Support delivered by a TTP provider.	Hour	\$71.24
04_136_0136_6_1	Group Activities In The Community - 1:4 - Standard - Weekday Daytime	Provision of support to enable a participant to engage in community, social and/or recreational activities.	Hour	\$17.97
04_136_0136_6_1_T	Group Activities In The Community - 1:4 - Standard - Weekday Daytime - TTP	Provision of support to enable a participant to engage in community, social and/or recreational activities. Support delivered by a TTP provider.	Hour	\$19.32
04_137_0136_6_1	Group Activities In The Community - 1:4 - Standard - Evening	Provision of support to enable a participant to engage in community, social and/or recreational activities.	Hour	\$19.83
04_137_0136_6_1_T	Group Activities In The Community - 1:4 - Standard - Evening - TTP	Provision of support to enable a participant to engage in community, social and/or recreational activities. Support delivered by a TTP provider.	Hour	\$21.31
04_138_0136_6_1	Group Activities In The Community - 1:4 - Standard - Saturday	Provision of support to enable a participant to engage in community, social and/or recreational activities.	Hour	\$24.71
04_138_0136_6_1_T	Group Activities In The Community - 1:4 - Standard - Saturday - TTP	Provision of support to enable a participant to engage in community, social and/or recreational activities. Support delivered by a TTP provider.	Hour	\$26.57
04_139_0136_6_1	Group Activities In The Community - 1:4 - Standard - Sunday	Provision of support to enable a participant to engage in community, social and/or recreational activities.	Hour	\$32.14
04_139_0136_6_1_T	Group Activities In The Community - 1:4 - Standard - Sunday - TTP	Provision of support to enable a participant to engage in community, social and/or recreational activities. Support delivered by a TTP provider.	Hour	\$34.55

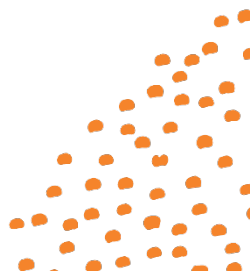
NOTE: Temporary Transformation Payment (TTP) supports and codes will be used on all new service agreements. Support Item Numbers ending in a T are TTP Supports.



Assistance with Social and Community Participation (cont'd)

Support Item Number	Support Item	Support Item Description	Unit of Measure	Unit Price
04_141_0136_6_1	Group Activities In The Community - 1:5 - Standard - Weekday Daytime	Provision of support to enable a participant to engage in community, social and/or recreational activities.	Hour	\$15.64
04_141_0136_6_1_T	Group Activities In The Community - 1:5 - Standard - Weekday Daytime - TTP	Provision of support to enable a participant to engage in community, social and/or recreational activities. Support delivered by a TTP provider.	Hour	\$16.82
04_142_0136_6_1	Group Activities In The Community - 1:5 - Standard - Evening	Provision of support to enable a participant to engage in community, social and/or recreational activities.	Hour	\$17.26
04_142_0136_6_1_T	Group Activities In The Community - 1:5 - Standard - Evening - TTP	Provision of support to enable a participant to engage in community, social and/or recreational activities. Support delivered by a TTP provider.	Hour	\$18.56
04_143_0136_6_1	Group Activities In The Community - 1:5 - Standard - Saturday	Provision of support to enable a participant to engage in community, social and/or recreational activities.	Hour	\$21.52
04_143_0136_6_1_T	Group Activities In The Community - 1:5 - Standard - Saturday - TTP	Provision of support to enable a participant to engage in community, social and/or recreational activities. Support delivered by a TTP provider.	Hour	\$23.13
04_144_0136_6_1	Group Activities In The Community - 1:5 - Standard - Sunday	Provision of support to enable a participant to engage in community, social and/or recreational activities.	Hour	\$27.98
04_144_0136_6_1_T	Group Activities In The Community - 1:5 - Standard - Sunday - TTP	Provision of support to enable a participant to engage in community, social and/or recreational activities. Support delivered by a TTP provider.	Hour	\$30.08

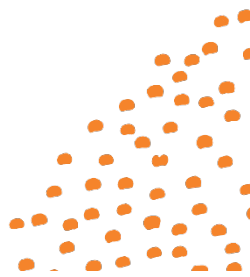
NOTE: Temporary Transformation Payment (TTP) supports and codes will be used on all new service agreements. Support Item Numbers ending in a T are TTP Supports.



Assistance with Social and Community Participation (cont'd)

Support Item Number	Support Item	Support Item Description	Unit of Measure	Unit Price
04_146_0104_6_1	Group Activities In The Community - 1:4 - Complex - Weekday Daytime	Provision of support to enable a participant to engage in community, social and/or recreational activities, where a support worker with additional qualifications and experience relevant to the participant's complex needs is required.	Hour	\$19.43
04_146_0104_6_1_T	Group Activities In The Community - 1:4 - Complex - Weekday Daytime - TTP	Provision of support to enable a participant to engage in community, social and/or recreational activities, where a support worker with additional qualifications and experience relevant to the participant's complex needs is required. Support delivered by a TTP provider.	Hour	\$20.78
04_147_0104_6_1	Group Activities In The Community - 1:4 - Complex - Evening	Provision of support to enable a participant to engage in community, social and/or recreational activities, where a support worker with additional qualifications and experience relevant to the participant's complex needs is required.	Hour	\$21.44
04_147_0104_6_1_T	Group Activities In The Community - 1:4 - Complex - Evening - TTP	Provision of support to enable a participant to engage in community, social and/or recreational activities, where a support worker with additional qualifications and experience relevant to the participant's complex needs is required. Support delivered by a TTP provider.	Hour	\$22.93

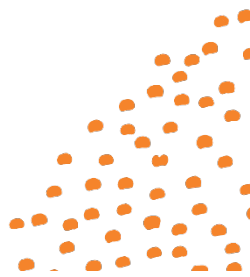
NOTE: Temporary Transformation Payment (TTP) supports and codes will be used on all new service agreements. Support Item Numbers ending in a T are TTP Supports.



Assistance with Social and Community Participation (cont'd)

Support Item Number	Support Item	Support Item Description	Unit of Measure	Unit Price
04_148_0104_6_1	Group Activities In The Community - 1:4 - Complex - Saturday	Provision of support to enable a participant to engage in community, social and/or recreational activities, where a support worker with additional qualifications and experience relevant to the participant's complex needs is required.	Hour	\$26.73
04_148_0104_6_1_T	Group Activities In The Community - 1:4 - Complex - Saturday - TTP	Provision of support to enable a participant to engage in community, social and/or recreational activities, where a support worker with additional qualifications and experience relevant to the participant's complex needs is required. Support delivered by a TTP provider.	Hour	\$28.59
04_149_0104_6_1	Group Activities In The Community - 1:4 - Complex - Sunday	Provision of support to enable a participant to engage in community, social and/or recreational activities, where a support worker with additional qualifications and experience relevant to the participant's complex needs is required.	Hour	\$34.76
04_149_0104_6_1_T	Group Activities In The Community - 1:4 - Complex - Sunday - TTP	Provision of support to enable a participant to engage in community, social and/or recreational activities, where a support worker with additional qualifications and experience relevant to the participant's complex needs is required. Support delivered by a TTP provider.	Hour	\$37.17

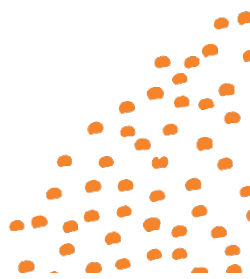
NOTE: Temporary Transformation Payment (TTP) supports and codes will be used on all new service agreements. Support Item Numbers ending in a T are TTP Supports.



Assistance with Social and Community Participation (cont'd)

Support Item Number	Support Item	Support Item Description	Unit of Measure	Unit Price
04_151_0104_6_1	Group Activities In The Community - 1:5 - Complex - Weekday Daytime	Provision of support to enable a participant to engage in community, social and/or recreational activities, where a support worker with additional qualifications and experience relevant to the participant's complex needs is required.	Hour	\$16.92
04_151_0104_6_1_T	Group Activities In The Community - 1:5 - Complex - Weekday Daytime - TTP	Provision of support to enable a participant to engage in community, social and/or recreational activities, where a support worker with additional qualifications and experience relevant to the participant's complex needs is required. Support delivered by a TTP provider.	Hour	\$18.09
04_152_0104_6_1	Group Activities In The Community - 1:5 - Complex - Evening	Provision of support to enable a participant to engage in community, social and/or recreational activities, where a support worker with additional qualifications and experience relevant to the participant's complex needs is required.	Hour	\$18.67
04_152_0104_6_1_T	Group Activities In The Community - 1:5 - Complex - Evening - TTP	Provision of support to enable a participant to engage in community, social and/or recreational activities, where a support worker with additional qualifications and experience relevant to the participant's complex needs is required. Support delivered by a TTP provider.	Hour	\$19.96

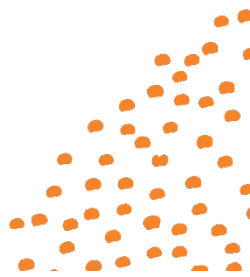
NOTE: Temporary Transformation Payment (TTP) supports and codes will be used on all new service agreements. Support Item Numbers ending in a T are TTP Supports.



Assistance with Social and Community Participation (cont'd)

Support Item Number	Support Item	Support Item Description	Unit of Measure	Unit Price
04_153_0104_6_1	Group Activities In The Community - 1:5 - Complex - Saturday	Provision of support to enable a participant to engage in community, social and/or recreational activities, where a support worker with additional qualifications and experience relevant to the participant's complex needs is required.	Hour	\$23.27
04_153_0104_6_1_T	Group Activities In The Community - 1:5 - Complex - Saturday - TTP	Provision of support to enable a participant to engage in community, social and/or recreational activities, where a support worker with additional qualifications and experience relevant to the participant's complex needs is required. Support delivered by a TTP provider.	Hour	\$24.89
04_154_0104_6_1	Group Activities In The Community - 1:5 - Complex - Sunday	Provision of support to enable a participant to engage in community, social and/or recreational activities, where a support worker with additional qualifications and experience relevant to the participant's complex needs is required.	Hour	\$30.26
04_154_0104_6_1_T	Group Activities In The Community - 1:5 - Complex - Sunday - TTP	Provision of support to enable a participant to engage in community, social and/or recreational activities, where a support worker with additional qualifications and experience relevant to the participant's complex needs is required. Support delivered by a TTP provider.	Hour	\$32.36
04_160_0136_6_1	Group Activities In A Centre - 1:1 - Standard - Weekday Daytime	Provision of support to enable a participant to engage in community, social and/or recreational activities in a centre.	Hour	\$54.95

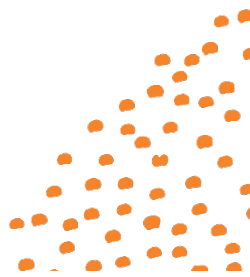
NOTE: Temporary Transformation Payment (TTP) supports and codes will be used on all new service agreements. Support Item Numbers ending in a T are TTP Supports.



Assistance with Social and Community Participation (cont'd)

Support Item Number	Support Item	Support Item Description	Unit of Measure	Unit Price
04_160_0136_6_1_T	Group Activities In A Centre - 1:1 - Standard - Weekday Daytime - TTP	Provision of support to enable a participant to engage in community, social and/or recreational activities in a centre. Support delivered by a TTP provider.	Hour	\$58.91
04_161_0136_6_1	Group Activities In A Centre - 1:1 - Standard - Evening	Provision of support to enable a participant to engage in community, social and/or recreational activities in a centre.	Hour	\$60.41
04_161_0136_6_1_T	Group Activities In A Centre - 1:1 - Standard - Evening - TTP	Provision of support to enable a participant to engage in community, social and/or recreational activities in a centre. Support delivered by a TTP provider.	Hour	\$64.79
04_162_0136_6_1	Group Activities In A Centre - 1:1 - Standard - Saturday	Provision of support to enable a participant to engage in community, social and/or recreational activities in a centre.	Hour	\$74.79
04_162_0136_6_1_T	Group Activities In A Centre - 1:1 - Standard - Saturday - TTP	Provision of support to enable a participant to engage in community, social and/or recreational activities in a centre. Support delivered by a TTP provider.	Hour	\$80.24
04_163_0136_6_1	Group Activities In A Centre - 1:1 - Standard - Sunday	Provision of support to enable a participant to engage in community, social and/or recreational activities in a centre.	Hour	\$96.62
04_163_0136_6_1_T	Group Activities In A Centre - 1:1 - Standard - Sunday - TTP	Provision of support to enable a participant to engage in community, social and/or recreational activities in a centre. Support delivered by a TTP provider.	Hour	\$103.71
04_164_0136_6_1	Group Activities In A Centre - 1:1 - Standard - Public Holiday	Provision of support to enable a participant to engage in community, social and/or recreational activities in a centre.	Hour	\$120.44

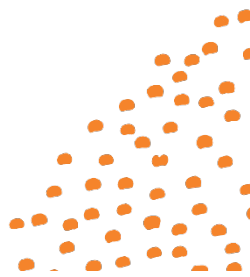
NOTE: Temporary Transformation Payment (TTP) supports and codes will be used on all new service agreements. Support Item Numbers ending in a T are TTP Supports.



Assistance with Social and Community Participation (cont'd)

Support Item Number	Support Item	Support Item Description	Unit of Measure	Unit Price
04_164_0136_6_1_T	Group Activities In A Centre - 1:1 - Standard - Public Holiday - TTP	Provision of support to enable a participant to engage in community, social and/or recreational activities in a centre. Support delivered by a TTP provider.	Hour	\$129.31
04_165_0136_6_1	Group Activities In A Centre - 1:2 - Standard - Weekday Daytime	Provision of support to enable a participant to engage in community, social and/or recreational activities in a centre.	Hour	\$31.70
04_165_0136_6_1_T	Group Activities In A Centre - 1:2 - Standard - Weekday Daytime - TTP	Provision of support to enable a participant to engage in community, social and/or recreational activities in a centre. Support delivered by a TTP provider.	Hour	\$33.91
04_166_0136_6_1	Group Activities In A Centre - 1:2 - Standard - Evening	Provision of support to enable a participant to engage in community, social and/or recreational activities in a centre.	Hour	\$34.75
04_166_0136_6_1_T	Group Activities In A Centre - 1:2 - Standard - Evening - TTP	Provision of support to enable a participant to engage in community, social and/or recreational activities in a centre. Support delivered by a TTP provider.	Hour	\$37.21
04_167_0136_6_1	Group Activities In A Centre - 1:2 - Standard - Saturday	Provision of support to enable a participant to engage in community, social and/or recreational activities in a centre.	Hour	\$42.81
04_167_0136_6_1_T	Group Activities In A Centre - 1:2 - Standard - Saturday - TTP	Provision of support to enable a participant to engage in community, social and/or recreational activities in a centre. Support delivered by a TTP provider.	Hour	\$45.86
04_168_0136_6_1	Group Activities In A Centre - 1:2 - Standard - Sunday	Provision of support to enable a participant to engage in community, social and/or recreational activities in a centre.	Hour	\$55.03

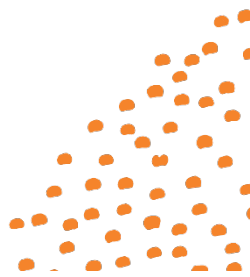
NOTE: Temporary Transformation Payment (TTP) supports and codes will be used on all new service agreements. Support Item Numbers ending in a T are TTP Supports.



Assistance with Social and Community Participation (cont'd)

Support Item Number	Support Item	Support Item Description	Unit of Measure	Unit Price
04_168_0136_6_1_T	Group Activities In A Centre - 1:2 - Standard - Sunday - TTP	Provision of support to enable a participant to engage in community, social and/or recreational activities in a centre. Support delivered by a TTP provider.	Hour	\$59.00
04_169_0136_6_1	Group Activities In A Centre - 1:2 - Standard - Public Holiday	Provision of support to enable a participant to engage in community, social and/or recreational activities in a centre.	Hour	\$68.37
04_169_0136_6_1_T	Group Activities In A Centre - 1:2 - Standard - Public Holiday - TTP	Provision of support to enable a participant to engage in community, social and/or recreational activities in a centre. Support delivered by a TTP provider.	Hour	\$73.34
04_170_0136_6_1	Group Activities In A Centre - 1:3 - Standard - Weekday Daytime	Provision of support to enable a participant to engage in community, social and/or recreational activities in a centre.	Hour	\$23.94
04_170_0136_6_1_T	Group Activities In A Centre - 1:3 - Standard - Weekday Daytime - TTP	Provision of support to enable a participant to engage in community, social and/or recreational activities in a centre. Support delivered by a TTP provider.	Hour	\$25.58
04_171_0136_6_1	Group Activities In A Centre - 1:3 - Standard - Evening	Provision of support to enable a participant to engage in community, social and/or recreational activities in a centre.	Hour	\$26.20
04_171_0136_6_1_T	Group Activities In A Centre - 1:3 - Standard - Evening - TTP	Provision of support to enable a participant to engage in community, social and/or recreational activities in a centre. Support delivered by a TTP provider.	Hour	\$28.01
04_172_0136_6_1	Group Activities In A Centre - 1:3 - Standard - Saturday	Provision of support to enable a participant to engage in community, social and/or recreational activities in a centre.	Hour	\$32.15

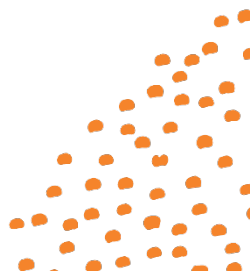
NOTE: Temporary Transformation Payment (TTP) supports and codes will be used on all new service agreements. Support Item Numbers ending in a T are TTP Supports.



Assistance with Social and Community Participation (cont'd)

Support Item Number	Support Item	Support Item Description	Unit of Measure	Unit Price
04_172_0136_6_1_T	Group Activities In A Centre - 1:3 - Standard - Saturday - TTP	Provision of support to enable a participant to engage in community, social and/or recreational activities in a centre. Support delivered by a TTP provider.	Hour	\$34.40
04_173_0136_6_1	Group Activities In A Centre - 1:3 - Standard - Sunday	Provision of support to enable a participant to engage in community, social and/or recreational activities in a centre.	Hour	\$41.17
04_173_0136_6_1_T	Group Activities In A Centre - 1:3 - Standard - Sunday - TTP	Provision of support to enable a participant to engage in community, social and/or recreational activities in a centre. Support delivered by a TTP provider.	Hour	\$44.10
04_174_0136_6_1	Group Activities In A Centre - 1:3 - Standard - Public Holiday	Provision of support to enable a participant to engage in community, social and/or recreational activities in a centre.	Hour	\$51.01
04_174_0136_6_1_T	Group Activities In A Centre - 1:3 - Standard - Public Holiday - TTP	Provision of support to enable a participant to engage in community, social and/or recreational activities in a centre. Support delivered by a TTP provider.	Hour	\$54.68
04_175_0136_6_1	Group Activities In A Centre - 1:4 - Standard - Weekday Daytime	Provision of support to enable a participant to engage in community, social and/or recreational activities in a centre.	Hour	\$20.07
04_175_0136_6_1_T	Group Activities In A Centre - 1:4 - Standard - Weekday Daytime - TTP	Provision of support to enable a participant to engage in community, social and/or recreational activities in a centre. Support delivered by a TTP provider.	Hour	\$21.42
04_176_0136_6_1	Group Activities In A Centre - 1:4 - Standard - Evening	Provision of support to enable a participant to engage in community, social and/or recreational activities in a centre.	Hour	\$21.93

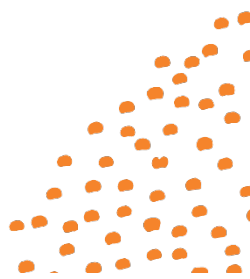
NOTE: Temporary Transformation Payment (TTP) supports and codes will be used on all new service agreements. Support Item Numbers ending in a T are TTP Supports.



Assistance with Social and Community Participation (cont'd)

Support Item Number	Support Item	Support Item Description	Unit of Measure	Unit Price
04_176_0136_6_1_T	Group Activities In A Centre - 1:4 - Standard - Evening - TTP	Provision of support to enable a participant to engage in community, social and/or recreational activities in a centre. Support delivered by a TTP provider.	Hour	\$23.41
04_177_0136_6_1	Group Activities In A Centre - 1:4 - Standard - Saturday	Provision of support to enable a participant to engage in community, social and/or recreational activities in a centre.	Hour	\$26.81
04_177_0136_6_1_T	Group Activities In A Centre - 1:4 - Standard - Saturday - TTP	Provision of support to enable a participant to engage in community, social and/or recreational activities in a centre. Support delivered by a TTP provider.	Hour	\$28.67
04_178_0136_6_1	Group Activities In A Centre - 1:4 - Standard - Sunday	Provision of support to enable a participant to engage in community, social and/or recreational activities in a centre.	Hour	\$34.24
04_178_0136_6_1_T	Group Activities In A Centre - 1:4 - Standard - Sunday - TTP	Provision of support to enable a participant to engage in community, social and/or recreational activities in a centre. Support delivered by a TTP provider.	Hour	\$36.65
04_179_0136_6_1	Group Activities In A Centre - 1:4 - Standard - Public Holiday	Provision of support to enable a participant to engage in community, social and/or recreational activities in a centre.	Hour	\$42.34
04_179_0136_6_1_T	Group Activities In A Centre - 1:4 - Standard - Public Holiday - TTP	Provision of support to enable a participant to engage in community, social and/or recreational activities in a centre. Support delivered by a TTP provider.	Hour	\$45.35
04_180_0136_6_1	Group Activities In A Centre - 1:5 - Standard - Weekday Daytime	Provision of support to enable a participant to engage in community, social and/or recreational activities in a centre.	Hour	\$17.74

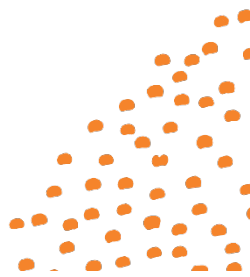
NOTE: Temporary Transformation Payment (TTP) supports and codes will be used on all new service agreements. Support Item Numbers ending in a T are TTP Supports.



Assistance with Social and Community Participation (cont'd)

Support Item Number	Support Item	Support Item Description	Unit of Measure	Unit Price
04_180_0136_6_1_T	Group Activities In A Centre - 1:5 - Standard - Weekday Daytime - TTP	Provision of support to enable a participant to engage in community, social and/or recreational activities in a centre. Support delivered by a TTP provider.	Hour	\$18.92
04_181_0136_6_1	Group Activities In A Centre - 1:5 - Standard - Evening	Provision of support to enable a participant to engage in community, social and/or recreational activities in a centre.	Hour	\$19.36
04_181_0136_6_1_T	Group Activities In A Centre - 1:5 - Standard - Evening - TTP	Provision of support to enable a participant to engage in community, social and/or recreational activities in a centre. Support delivered by a TTP provider.	Hour	\$20.66
04_182_0136_6_1	Group Activities In A Centre - 1:5 - Standard - Saturday	Provision of support to enable a participant to engage in community, social and/or recreational activities in a centre.	Hour	\$23.62
04_182_0136_6_1_T	Group Activities In A Centre - 1:5 - Standard - Saturday - TTP	Provision of support to enable a participant to engage in community, social and/or recreational activities in a centre. Support delivered by a TTP provider.	Hour	\$25.23
04_183_0136_6_1	Group Activities In A Centre - 1:5 - Standard - Sunday	Provision of support to enable a participant to engage in community, social and/or recreational activities in a centre.	Hour	\$30.08
04_183_0136_6_1_T	Group Activities In A Centre - 1:5 - Standard - Sunday - TTP	Provision of support to enable a participant to engage in community, social and/or recreational activities in a centre. Support delivered by a TTP provider.	Hour	\$32.18
04_184_0136_6_1	Group Activities In A Centre - 1:5 - Standard - Public Holiday	Provision of support to enable a participant to engage in community, social and/or recreational activities in a centre.	Hour	\$37.13

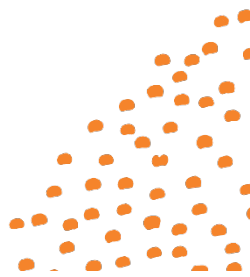
NOTE: Temporary Transformation Payment (TTP) supports and codes will be used on all new service agreements. Support Item Numbers ending in a T are TTP Supports.



Assistance with Social and Community Participation (cont'd)

Support Item Number	Support Item	Support Item Description	Unit of Measure	Unit Price
04_184_0136_6_1_T	Group Activities In A Centre - 1:5 - Standard - Public Holiday - TTP	Provision of support to enable a participant to engage in community, social and/or recreational activities in a centre. Support delivered by a TTP provider.	Hour	\$39.75
04_185_0104_6_1	Group Activities In A Centre - 1:1 - Complex - Weekday Daytime	Provision of support to enable a participant to engage in community, social and/or recreational activities in a centre, where a support worker with additional qualifications and experience relevant to the participant's complex needs is required.	Hour	\$59.25
04_185_0104_6_1_T	Group Activities In A Centre - 1:1 - Complex - Weekday Daytime - TTP	Provision of support to enable a participant to engage in community, social and/or recreational activities in a centre, where a support worker with additional qualifications and experience relevant to the participant's complex needs is required. Support delivered by a TTP provider.	Hour	\$63.21
04_186_0104_6_1	Group Activities In A Centre - 1:1 - Complex - Evening	Provision of support to enable a participant to engage in community, social and/or recreational activities in a centre, where a support worker with additional qualifications and experience relevant to the participant's complex needs is required.	Hour	\$65.16

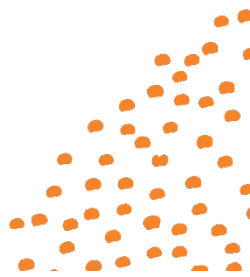
NOTE: Temporary Transformation Payment (TTP) supports and codes will be used on all new service agreements. Support Item Numbers ending in a T are TTP Supports.



Assistance with Social and Community Participation (cont'd)

Support Item Number	Support Item	Support Item Description	Unit of Measure	Unit Price
04_186_0104_6_1_T	Group Activities In A Centre - 1:1 - Complex - Evening - TTP	Provision of support to enable a participant to engage in community, social and/or recreational activities in a centre, where a support worker with additional qualifications and experience relevant to the participant's complex needs is required. Support delivered by a TTP provider.	Hour	\$69.54
04_187_0104_6_1	Group Activities In A Centre - 1:1 - Complex - Saturday	Provision of support to enable a participant to engage in community, social and/or recreational activities in a centre, where a support worker with additional qualifications and experience relevant to the participant's complex needs is required.	Hour	\$80.73
04_187_0104_6_1_T	Group Activities In A Centre - 1:1 - Complex - Saturday - TTP	Provision of support to enable a participant to engage in community, social and/or recreational activities in a centre, where a support worker with additional qualifications and experience relevant to the participant's complex needs is required. Support delivered by a TTP provider.	Hour	\$86.18
04_188_0104_6_1	Group Activities In A Centre - 1:1 - Complex - Sunday	Provision of support to enable a participant to engage in community, social and/or recreational activities in a centre, where a support worker with additional qualifications and experience relevant to the participant's complex needs is required.	Hour	\$104.33

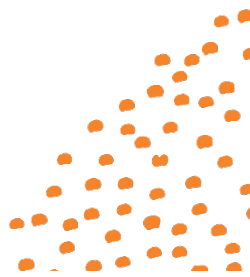
NOTE: Temporary Transformation Payment (TTP) supports and codes will be used on all new service agreements. Support Item Numbers ending in a T are TTP Supports.



Assistance with Social and Community Participation (cont'd)

Support Item Number	Support Item	Support Item Description	Unit of Measure	Unit Price
04_188_0104_6_1_T	Group Activities In A Centre - 1:1 - Complex - Sunday - TTP	Provision of support to enable a participant to engage in community, social and/or recreational activities in a centre, where a support worker with additional qualifications and experience relevant to the participant's complex needs is required. Support delivered by a TTP provider.	Hour	\$111.42
04_189_0104_6_1	Group Activities In A Centre - 1:1 - Complex - Public Holiday	Provision of support to enable a participant to engage in community, social and/or recreational activities in a centre, where a support worker with additional qualifications and experience relevant to the participant's complex needs is required.	Hour	\$130.07
04_189_0104_6_1_T	Group Activities In A Centre - 1:1 - Complex - Public Holiday - TTP	Provision of support to enable a participant to engage in community, social and/or recreational activities in a centre, where a support worker with additional qualifications and experience relevant to the participant's complex needs is required. Support delivered by a TTP provider.	Hour	\$138.94
04_190_0104_6_1	Group Activities In A Centre - 1:2 - Complex - Weekday Daytime	Provision of support to enable a participant to engage in community, social and/or recreational activities in a centre, where a support worker with additional qualifications and experience relevant to the participant's complex needs is required.	Hour	\$34.10

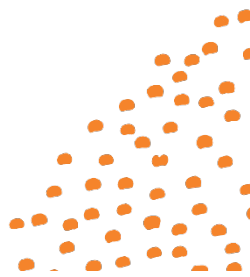
NOTE: Temporary Transformation Payment (TTP) supports and codes will be used on all new service agreements. Support Item Numbers ending in a T are TTP Supports.



Assistance with Social and Community Participation (cont'd)

Support Item Number	Support Item	Support Item Description	Unit of Measure	Unit Price
04_190_0104_6_1_T	Group Activities In A Centre - 1:2 - Complex - Weekday Daytime - TTP	Provision of support to enable a participant to engage in community, social and/or recreational activities in a centre, where a support worker with additional qualifications and experience relevant to the participant's complex needs is required. Support delivered by a TTP provider.	Hour	\$36.32
04_191_0104_6_1	Group Activities In A Centre - 1:2 - Complex - Evening	Provision of support to enable a participant to engage in community, social and/or recreational activities in a centre, where a support worker with additional qualifications and experience relevant to the participant's complex needs is required.	Hour	\$37.41
04_191_0104_6_1_T	Group Activities In A Centre - 1:2 - Complex - Evening - TTP	Provision of support to enable a participant to engage in community, social and/or recreational activities in a centre, where a support worker with additional qualifications and experience relevant to the participant's complex needs is required. Support delivered by a TTP provider.	Hour	\$39.87
04_192_0104_6_1	Group Activities In A Centre - 1:2 - Complex - Saturday	Provision of support to enable a participant to engage in community, social and/or recreational activities in a centre, where a support worker with additional qualifications and experience relevant to the participant's complex needs is required.	Hour	\$46.13

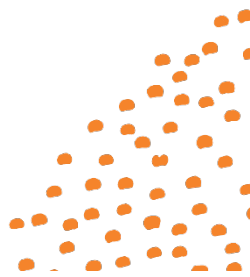
NOTE: Temporary Transformation Payment (TTP) supports and codes will be used on all new service agreements. Support Item Numbers ending in a T are TTP Supports.



Assistance with Social and Community Participation (cont'd)

Support Item Number	Support Item	Support Item Description	Unit of Measure	Unit Price
04_192_0104_6_1_T	Group Activities In A Centre - 1:2 - Complex - Saturday - TTP	Provision of support to enable a participant to engage in community, social and/or recreational activities in a centre, where a support worker with additional qualifications and experience relevant to the participant's complex needs is required. Support delivered by a TTP provider.	Hour	\$49.18
04_193_0104_6_1	Group Activities In A Centre - 1:2 - Complex - Sunday	Provision of support to enable a participant to engage in community, social and/or recreational activities in a centre, where a support worker with additional qualifications and experience relevant to the participant's complex needs is required.	Hour	\$59.35
04_193_0104_6_1_T	Group Activities In A Centre - 1:2 - Complex - Sunday - TTP	Provision of support to enable a participant to engage in community, social and/or recreational activities in a centre, where a support worker with additional qualifications and experience relevant to the participant's complex needs is required. Support delivered by a TTP provider.	Hour	\$63.32
04_194_0104_6_1	Group Activities In A Centre - 1:2 - Complex - Public Holiday	Provision of support to enable a participant to engage in community, social and/or recreational activities in a centre, where a support worker with additional qualifications and experience relevant to the participant's complex needs is required.	Hour	\$73.76

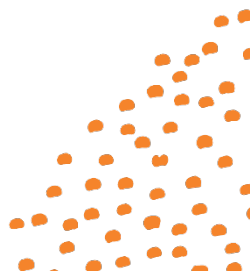
NOTE: Temporary Transformation Payment (TTP) supports and codes will be used on all new service agreements. Support Item Numbers ending in a T are TTP Supports.



Assistance with Social and Community Participation (cont'd)

Support Item Number	Support Item	Support Item Description	Unit of Measure	Unit Price
04_194_0104_6_1_T	Group Activities In A Centre - 1:2 - Complex - Public Holiday - TTP	Provision of support to enable a participant to engage in community, social and/or recreational activities in a centre, where a support worker with additional qualifications and experience relevant to the participant's complex needs is required. Support delivered by a TTP provider.	Hour	\$78.73
04_195_0104_6_1	Group Activities In A Centre - 1:3 - Complex - Weekday Daytime	Provision of support to enable a participant to engage in community, social and/or recreational activities in a centre, where a support worker with additional qualifications and experience relevant to the participant's complex needs is required.	Hour	\$25.72
04_195_0104_6_1_T	Group Activities In A Centre - 1:3 - Complex - Weekday Daytime - TTP	Provision of support to enable a participant to engage in community, social and/or recreational activities in a centre, where a support worker with additional qualifications and experience relevant to the participant's complex needs is required. Support delivered by a TTP provider.	Hour	\$27.36
04_196_0104_6_1	Group Activities In A Centre - 1:3 - Complex - Evening	Provision of support to enable a participant to engage in community, social and/or recreational activities in a centre, where a support worker with additional qualifications and experience relevant to the participant's complex needs is required.	Hour	\$28.16

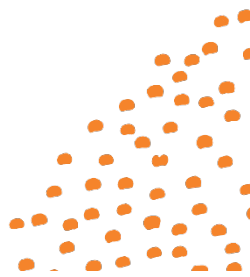
NOTE: Temporary Transformation Payment (TTP) supports and codes will be used on all new service agreements. Support Item Numbers ending in a T are TTP Supports.



Assistance with Social and Community Participation (cont'd)

Support Item Number	Support Item	Support Item Description	Unit of Measure	Unit Price
04_196_0104_6_1_T	Group Activities In A Centre - 1:3 - Complex - Evening - TTP	Provision of support to enable a participant to engage in community, social and/or recreational activities in a centre, where a support worker with additional qualifications and experience relevant to the participant's complex needs is required. Support delivered by a TTP provider.	Hour	\$29.98
04_197_0104_6_1	Group Activities In A Centre - 1:3 - Complex - Saturday	Provision of support to enable a participant to engage in community, social and/or recreational activities in a centre, where a support worker with additional qualifications and experience relevant to the participant's complex needs is required.	Hour	\$34.60
04_197_0104_6_1_T	Group Activities In A Centre - 1:3 - Complex - Saturday - TTP	Provision of support to enable a participant to engage in community, social and/or recreational activities in a centre, where a support worker with additional qualifications and experience relevant to the participant's complex needs is required. Support delivered by a TTP provider.	Hour	\$36.85
04_198_0104_6_1	Group Activities In A Centre - 1:3 - Complex - Sunday	Provision of support to enable a participant to engage in community, social and/or recreational activities in a centre, where a support worker with additional qualifications and experience relevant to the participant's complex needs is required.	Hour	\$44.36

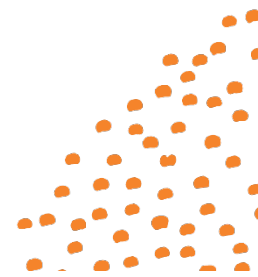
NOTE: Temporary Transformation Payment (TTP) supports and codes will be used on all new service agreements. Support Item Numbers ending in a T are TTP Supports.



Assistance with Social and Community Participation (cont'd)

Support Item Number	Support Item	Support Item Description	Unit of Measure	Unit Price
04_198_0104_6_1_T	Group Activities In A Centre - 1:3 - Complex - Sunday - TTP	Provision of support to enable a participant to engage in community, social and/or recreational activities in a centre, where a support worker with additional qualifications and experience relevant to the participant's complex needs is required. Support delivered by a TTP provider.	Hour	\$47.29
04_199_0104_6_1	Group Activities In A Centre - 1:3 - Complex - Public Holiday	Provision of support to enable a participant to engage in community, social and/or recreational activities in a centre, where a support worker with additional qualifications and experience relevant to the participant's complex needs is required.	Hour	\$54.99
04_199_0104_6_1_T	Group Activities In A Centre - 1:3 - Complex - Public Holiday - TTP	Provision of support to enable a participant to engage in community, social and/or recreational activities in a centre, where a support worker with additional qualifications and experience relevant to the participant's complex needs is required. Support delivered by a TTP provider.	Hour	\$58.66
04_200_0104_6_1	Group Activities In A Centre - 1:4 - Complex - Weekday Daytime	Provision of support to enable a participant to engage in community, social and/or recreational activities in a centre, where a support worker with additional qualifications and experience relevant to the participant's complex needs is required.	Hour	\$21.53

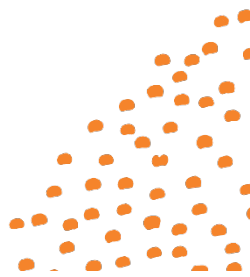
NOTE: Temporary Transformation Payment (TTP) supports and codes will be used on all new service agreements. Support Item Numbers ending in a T are TTP Supports.



Assistance with Social and Community Participation (cont'd)

Support Item Number	Support Item	Support Item Description	Unit of Measure	Unit Price
04_200_0104_6_1_T	Group Activities In A Centre - 1:4 - Complex - Weekday Daytime - TTP	Provision of support to enable a participant to engage in community, social and/or recreational activities in a centre, where a support worker with additional qualifications and experience relevant to the participant's complex needs is required. Support delivered by a TTP provider.	Hour	\$22.88
04_201_0104_6_1	Group Activities In A Centre - 1:4 - Complex - Evening	Provision of support to enable a participant to engage in community, social and/or recreational activities in a centre, where a support worker with additional qualifications and experience relevant to the participant's complex needs is required.	Hour	\$23.54
04_201_0104_6_1_T	Group Activities In A Centre - 1:4 - Complex - Evening - TTP	Provision of support to enable a participant to engage in community, social and/or recreational activities in a centre, where a support worker with additional qualifications and experience relevant to the participant's complex needs is required. Support delivered by a TTP provider.	Hour	\$25.03
04_202_0104_6_1	Group Activities In A Centre - 1:4 - Complex - Saturday	Provision of support to enable a participant to engage in community, social and/or recreational activities in a centre, where a support worker with additional qualifications and experience relevant to the participant's complex needs is required.	Hour	\$28.83

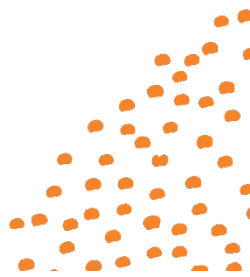
NOTE: Temporary Transformation Payment (TTP) supports and codes will be used on all new service agreements. Support Item Numbers ending in a T are TTP Supports.



Assistance with Social and Community Participation (cont'd)

Support Item Number	Support Item	Support Item Description	Unit of Measure	Unit Price
04_202_0104_6_1_T	Group Activities In A Centre - 1:4 - Complex - Saturday - TTP	Provision of support to enable a participant to engage in community, social and/or recreational activities in a centre, where a support worker with additional qualifications and experience relevant to the participant's complex needs is required. Support delivered by a TTP provider.	Hour	\$30.69
04_203_0104_6_1	Group Activities In A Centre - 1:4 - Complex - Sunday	Provision of support to enable a participant to engage in community, social and/or recreational activities in a centre, where a support worker with additional qualifications and experience relevant to the participant's complex needs is required.	Hour	\$36.86
04_203_0104_6_1_T	Group Activities In A Centre - 1:4 - Complex - Sunday - TTP	Provision of support to enable a participant to engage in community, social and/or recreational activities in a centre, where a support worker with additional qualifications and experience relevant to the participant's complex needs is required. Support delivered by a TTP provider.	Hour	\$39.27
04_204_0104_6_1	Group Activities In A Centre - 1:4 - Complex - Public Holiday	Provision of support to enable a participant to engage in community, social and/or recreational activities in a centre, where a support worker with additional qualifications and experience relevant to the participant's complex needs is required.	Hour	\$45.61

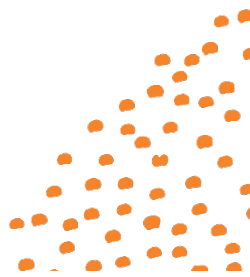
NOTE: Temporary Transformation Payment (TTP) supports and codes will be used on all new service agreements. Support Item Numbers ending in a T are TTP Supports.



Assistance with Social and Community Participation (cont'd)

Support Item Number	Support Item	Support Item Description	Unit of Measure	Unit Price
04_204_0104_6_1_T	Group Activities In A Centre - 1:4 - Complex - Public Holiday - TTP	Provision of support to enable a participant to engage in community, social and/or recreational activities in a centre, where a support worker with additional qualifications and experience relevant to the participant's complex needs is required. Support delivered by a TTP provider.	Hour	\$48.63
04_205_0104_6_1	Group Activities In A Centre - 1:5 - Complex - Weekday Daytime	Provision of support to enable a participant to engage in community, social and/or recreational activities in a centre, where a support worker with additional qualifications and experience relevant to the participant's complex needs is required.	Hour	\$19.02
04_205_0104_6_1_T	Group Activities In A Centre - 1:5 - Complex - Weekday Daytime - TTP	Provision of support to enable a participant to engage in community, social and/or recreational activities in a centre, where a support worker with additional qualifications and experience relevant to the participant's complex needs is required. Support delivered by a TTP provider.	Hour	\$20.19
04_206_0104_6_1	Group Activities In A Centre - 1:5 - Complex - Evening	Provision of support to enable a participant to engage in community, social and/or recreational activities in a centre, where a support worker with additional qualifications and experience relevant to the participant's complex needs is required.	Hour	\$20.77

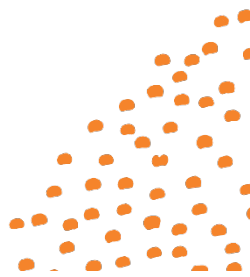
NOTE: Temporary Transformation Payment (TTP) supports and codes will be used on all new service agreements. Support Item Numbers ending in a T are TTP Supports.



Assistance with Social and Community Participation (cont'd)

Support Item Number	Support Item	Support Item Description	Unit of Measure	Unit Price
04_206_0104_6_1_T	Group Activities In A Centre - 1:5 - Complex - Evening - TTP	Provision of support to enable a participant to engage in community, social and/or recreational activities in a centre, where a support worker with additional qualifications and experience relevant to the participant's complex needs is required. Support delivered by a TTP provider.	Hour	\$22.06
04_207_0104_6_1	Group Activities In A Centre - 1:5 - Complex - Saturday	Provision of support to enable a participant to engage in community, social and/or recreational activities in a centre, where a support worker with additional qualifications and experience relevant to the participant's complex needs is required.	Hour	\$25.37
04_207_0104_6_1_T	Group Activities In A Centre - 1:5 - Complex - Saturday - TTP	Provision of support to enable a participant to engage in community, social and/or recreational activities in a centre, where a support worker with additional qualifications and experience relevant to the participant's complex needs is required. Support delivered by a TTP provider.	Hour	\$26.99
04_208_0104_6_1	Group Activities In A Centre - 1:5 - Complex - Sunday	Provision of support to enable a participant to engage in community, social and/or recreational activities in a centre, where a support worker with additional qualifications and experience relevant to the participant's complex needs is required.	Hour	\$32.36

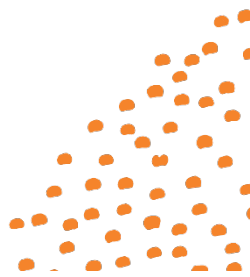
NOTE: Temporary Transformation Payment (TTP) supports and codes will be used on all new service agreements. Support Item Numbers ending in a T are TTP Supports.



Assistance with Social and Community Participation (cont'd)

Support Item Number	Support Item	Support Item Description	Unit of Measure	Unit Price
04_208_0104_6_1_T	Group Activities In A Centre - 1:5 - Complex - Sunday - TTP	Provision of support to enable a participant to engage in community, social and/or recreational activities in a centre, where a support worker with additional qualifications and experience relevant to the participant's complex needs is required. Support delivered by a TTP provider.	Hour	\$34.46
04_209_0104_6_1	Group Activities In A Centre - 1:5 - Complex - Public Holiday	Provision of support to enable a participant to engage in community, social and/or recreational activities in a centre, where a support worker with additional qualifications and experience relevant to the participant's complex needs is required.	Hour	\$39.98
04_209_0104_6_1_T	Group Activities In A Centre - 1:5 - Complex - Public Holiday - TTP	Provision of support to enable a participant to engage in community, social and/or recreational activities in a centre, where a support worker with additional qualifications and experience relevant to the participant's complex needs is required. Support delivered by a TTP provider.	Hour	\$42.60
04_300_0104_1_1	Access Community, Social And Rec Activities - Level 1 - Weekday Daytime	Supporting a participant to engage in community, social and/or recreational activities.	Hour	\$52.85
04_301_0104_1_1	Access Community, Social And Rec Activities - Level 1 - Evening	Supporting a participant to engage in community, social and/or recreational activities.	Hour	\$58.31
04_302_0104_1_1	Access Community, Social And Rec Activities - Level 1 - Saturday	Supporting a participant to engage in community, social and/or recreational activities.	Hour	\$72.69

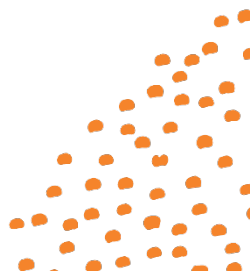
NOTE: Temporary Transformation Payment (TTP) supports and codes will be used on all new service agreements. Support Item Numbers ending in a T are TTP Supports.



Assistance with Social and Community Participation (cont'd)

Support Item Number	Support Item	Support Item Description	Unit of Measure	Unit Price
04_303_0104_1_1	Access Community, Social And Rec Activities - Level 1 - Sunday	Supporting a participant to engage in community, social and/or recreational activities.	Hour	\$94.52
04_304_0104_1_1	Access Community, Social And Rec Activities - Level 1 - Public Holiday	Supporting a participant to engage in community, social and/or recreational activities.	Hour	\$118.34
04_400_0104_1_1	Access Community, Social And Rec Activities - Level 2 - Weekday Daytime	Supporting a participant to engage in community, social and/or recreational activities, where the support delivered is high intensity and a more skilled or experienced support worker is required.	Hour	\$57.15
04_400_0104_1_1_T	Access Community, Social And Rec Activities - Level 2 - Weekday Daytime - TTP	Supporting a participant to engage in community, social and/or recreational activities, where the support delivered is high intensity and a more skilled or experienced support worker is required. Support delivered by a TTP provider.	Hour	\$61.11
04_401_0104_1_1	Access Community, Social And Rec Activities - Level 2 - Evening	Supporting a participant to engage in community, social and/or recreational activities, where the support delivered is high intensity and a more skilled or experienced support worker is required.	Hour	\$63.06
04_402_0104_1_1	Access Community, Social And Rec Activities - Level 2 - Saturday	Supporting a participant to engage in community, social and/or recreational activities, where the support delivered is high intensity and a more skilled or experienced support worker is required.	Hour	\$78.63

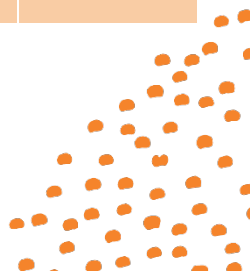
NOTE: Temporary Transformation Payment (TTP) supports and codes will be used on all new service agreements. Support Item Numbers ending in a T are TTP Supports.



Assistance with Social and Community Participation (cont'd)

Support Item Number	Support Item	Support Item Description	Unit of Measure	Unit Price
04_403_0104_1_1	Access Community, Social And Rec Activities - Level 2 - Sunday	Supporting a participant to engage in community, social and/or recreational activities, where the support delivered is high intensity and a more skilled or experienced support worker is required.	Hour	\$102.23
04_404_0104_1_1	Access Community, Social And Rec Activities - Level 2 - Public Holiday	Supporting a participant to engage in community, social and/or recreational activities, where the support delivered is high intensity and a more skilled or experienced support worker is required.	Hour	\$127.97
04_500_0104_1_1	Access Community, Social And Rec Activities - Level 3 - Weekday Daytime	Supporting a participant to engage in community, social and/or recreational activities, where the support delivered is very high intensity and a more skilled or experienced support worker is required.	Hour	\$60.04
04_501_0104_1_1	Access Community, Social And Rec Activities - Level 3 - Evening	Supporting a participant to engage in community, social and/or recreational activities, where the support delivered is very high intensity and a more skilled or experienced support worker is required.	Hour	\$66.23
04_502_0104_1_1	Access Community, Social And Rec Activities - Level 3 - Saturday	Supporting a participant to engage in community, social and/or recreational activities, where the support delivered is very high intensity and a more skilled or experienced support worker is required.	Hour	\$82.58
04_503_0104_1_1	Access Community, Social And Rec Activities - Level 3 - Sunday	Supporting a participant to engage in community, social and/or recreational activities, where the support delivered is very high intensity and a more skilled or experienced support worker is required.	Hour	\$107.37

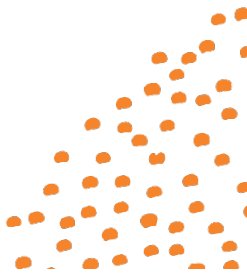
NOTE: Temporary Transformation Payment (TTP) supports and codes will be used on all new service agreements. Support Item Numbers ending in a T are TTP Supports.



Assistance with Social and Community Participation (cont'd)

Support Item Number	Support Item	Support Item Description	Unit of Measure	Unit Price
04_504_0104_1_1	Access Community, Social And Rec Activities - Level 3 - Public Holiday	Supporting a participant to engage in community, social and/or recreational activities, where the support delivered is very high intensity and a more skilled or experienced support worker is required.	Hour	\$134.42

NOTE: Temporary Transformation Payment (TTP) supports and codes will be used on all new service agreements. Support Item Numbers ending in a T are TTP Supports.



Support Coordination

Support Item Number	Support Item	Support Item Description	Unit of Measure	Unit Price
07_001_0106_8_3	Level 1: Support Connection	Assistance for participants to implement their plan by strengthening the ability to connect with the broader systems of supports and understand the purpose of the funded supports and participate in the community. Support Connection will assist a participant to understand the aspects of the plan, assisting in ongoing management of supports, and answer questions as they arise.	Hour	\$60.16
07_002_0106_8_3	Level 2: Coordination Of Supports	Further qualifications/experience required to strengthen a participant's ability to design and the build their supports with an emphasis on linking the broader systems of support across a complex service delivery environment. Coordination of Supports is to focus on supporting participants to direct their lives, not just their services. This may include resolving points of crisis and developing resilience in the participant's network.	Hour	\$98.06


NOTE: Temporary Transformation Payment (TTP) supports and codes will be used on all new service agreements. Support Item Numbers ending in a T are TTP Supports.



**Increased Social and
Community Participation**

Support Item Number	Support Item	Support Item Description	Unit of Measure	Unit Price
09_006_0106_6_3	Life Transition Planning Incl. Mentoring, Peer-Support And Indiv Skill Develop	Establishing volunteer assistance within the participant's home or community to develop skills. For instance, assistance in attending appointments, shopping, bill paying, taking part in social activities and maintaining contact with others.	Hour	\$60.16
09_007_0117_6_3	Skills Development In A Group	Training for the participant in a group of 2 or more to increase their independence in daily personal activities.	Hour	\$29.26
09_008_0116_6_3	Innovative Community Participation	Mainstream services that promote inclusion of people with disability to expand opportunities for community participation and employment.	Each occurrence	Dependant on activity - quote will be in service agreement
09_009_0117_6_3	Individual Skills Development And Training	Individual life skills development and training including public transport training and support, developing skills for community, social and recreational participation.	Hour	\$58.52
09_010_0125_6_3	Community Participation Activities	Participation in community based activities that build skills and independence.	Each occurrence	Dependant on activity - quote will be in service agreement

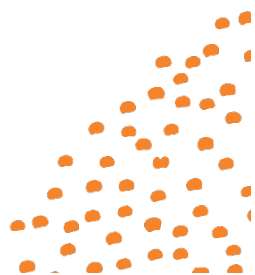
NOTE: Temporary Transformation Payment (TTP) supports and codes will be used on all new service agreements. Support Item Numbers ending in a T are TTP Supports.



Improved Relationships

Support Item Number	Support Item	Support Item Description	Unit of Measure	Unit Price
11_024_0117_7_3	Individual Social Skills Development	Social skills development with an individual, for participation in community and social activities.	Hour	\$58.52

NOTE: Temporary Transformation Payment (TTP) supports and codes will be used on all new service agreements. Support Item Numbers ending in a T are TTP Supports.



Improved Daily Living Skills

Support Item Number	Support Item	Support Item Description	Unit of Measure	Unit Price
15_035_0106_1_3	Assistance With Decision Making, Daily Planning and Budgeting	Provision of time limited support to assist a person to develop and maintain daily budget, including assisting in planning purchases.	Hour	\$46.31
15_037_0117_1_3	Individual Skill Development And Training Including Public Transport Training	Individual training provided in the home for general life skills to increase independence.	Hour	\$46.31
15_038_0117_1_3	Training For Carers/Parents	Training for carers in matters related to caring for a person with disability.	Hour	\$58.52

NOTE: Temporary Transformation Payment (TTP) supports and codes will be used on all new service agreements. Support Item Numbers ending in a T are TTP Supports.

